



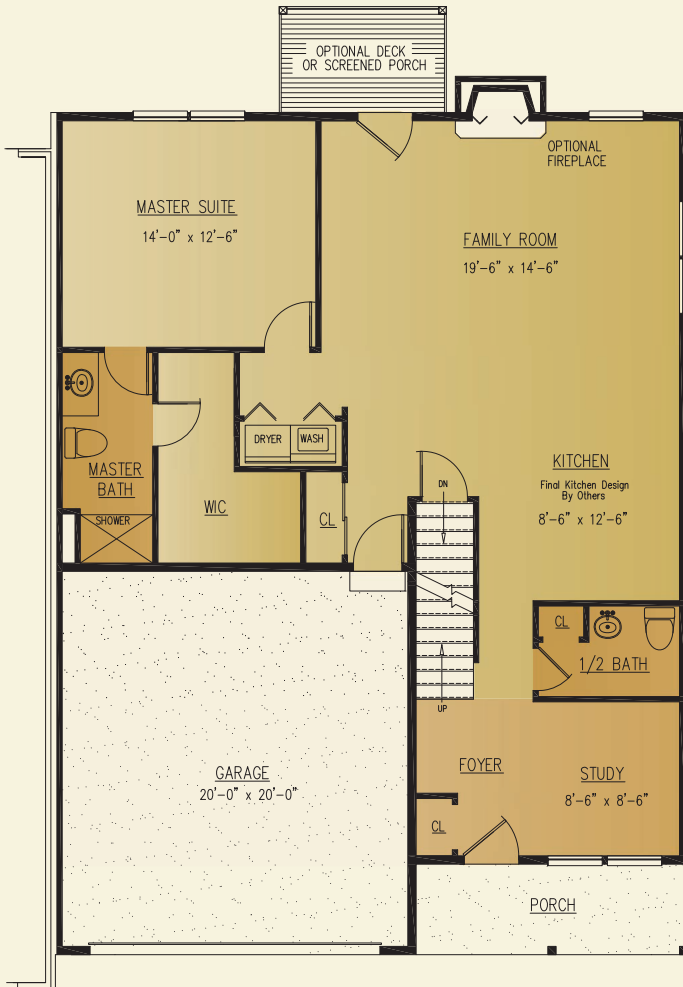
# The **elm**

Total Living Area - 1,736 sq. ft.

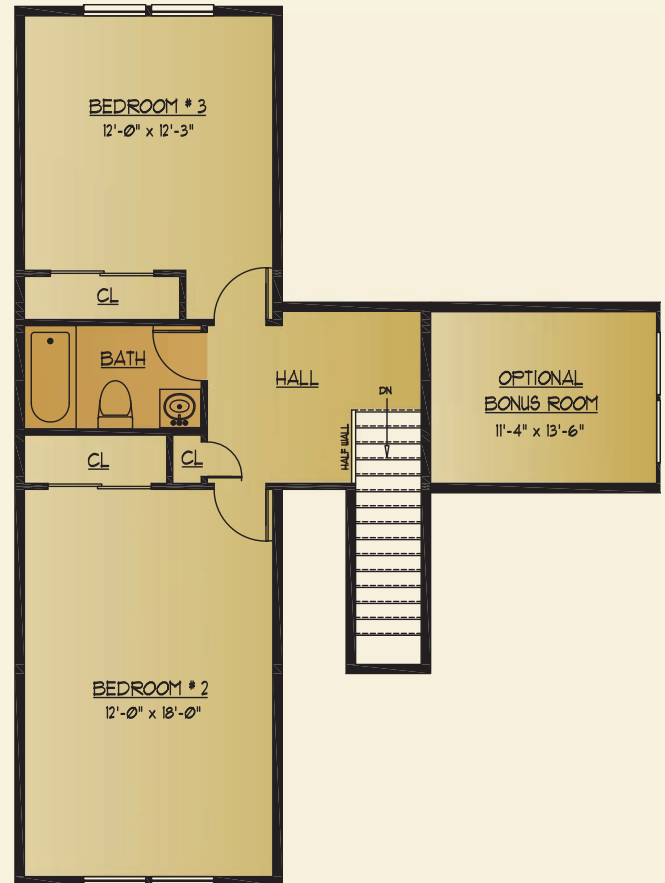
THE COMPLETE OFFERING TERMS ARE IN THE OFFERING PLAN AVAILABLE FROM SPONSOR. FILE NUMBERS H015-0049-CPS-7, H10-0006, H10-0007, AND 14-0003  
All Information Is For Illustrative Purposes Only And May Include Features And Options That Are Not Part Of The Contract. Refer To Contract Documents For Specific Details. All Information Contained Herein Is The Sole Property Of Heritage Builders Group, LLC and Heritage Custom Builders LLC And Protected Under The Architectural Works Copyright Protection Act And Subsequent Amendments And Shall Not Be Reproduced In Any Form. Rev. 6/1/17

# The elm

1st Floor -	1,136
2nd Floor -	600
Total Living Area -	1,736 sq. ft.
Bonus Room - 110 sq. ft.	1,846 sq. ft.



1st floor



THE COMPLETE OFFERING TERMS ARE IN THE OFFERING PLAN AVAILABLE FROM SPONSOR. FILE NUMBERS H015-0049-CPS-7, H10-0006, H10-0007, AND 14-0003

All Information Is For Illustrative Purposes Only And May Include Features And Options That Are Not Part Of The Contract. Refer To Contract Documents For Specific Details. All Information Contained Herein Is The Sole Property Of Heritage Builders Group, LLC and Heritage Custom Builders LLC And Protected Under The Architectural Works Copyright Protection Act And Subsequent Amendments And Shall Not Be Reproduced In Any Form. Rev. 6/1/17